



INFINITY DESIGN AND CONSTRUCTION GROUP

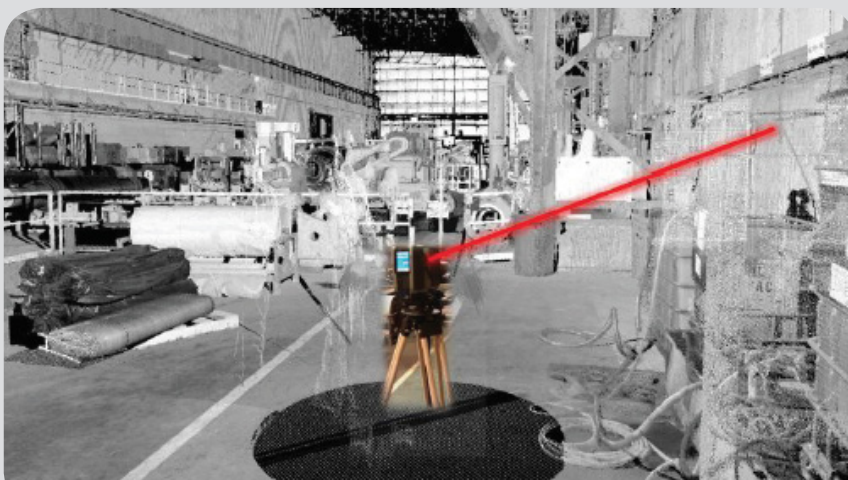
Infinity Design & Construction Group, Inc. is the premier provider for all your engineering and design, construction layout, and construction management needs. There is no project too big or too small. We provide all your project needs from start to finish using 3D Scanning, 3D Design/Coordination, Robotic Total Station Construction Layout and Construction Management. Our goal is to provide our client with superior quality service from their project's conception until a turn-key project is handed over to the owner.

OUR TEAM

Infinity was founded in July of 2013. The owners of Infinity have over 80 years combined experience in the commercial and industrial piping industry. Infinity Design & Construction Group, Inc. is signatory to plumbers, pipefitters and service technicians local 502 and its President is an active member with over 15 years of experience in the industry. Infinity employs seasoned union pipefitters that are trained as designers. What better people to meet your design needs, than the ones that have been in the trenches installing these systems. At Infinity we feel that staffing experienced pipefitters will expedite the design process and offer seamless transition at all stages of the constructions process. We offer services designed to meet all your construction needs; 3D Scanning (Front Loading), 3D Design/Coordination (Engineering & Design), Robotic Construction Layout and Construction Management. Our focus is providing a complete start to finish quality service at reasonable rates.

OUR MISSION

We use the latest tools of technology to engineer, design, and deliver the highest quality project-eliminating construction interferences and costly budget overruns. We accomplish this by Laser Scanning (Front End Loading), 3D Modeling (Engineering and Design), and Construction Assistance (Total Robotic Station for Construction Layout).



CONTACT

HEADQUARTERS

11605 Shelbyville Road
Louisville, KY 40243

Jeremy McCool, President
Jeremy@infinitydgc.com

(p): 502.244.2235
(f): 502.244.2236

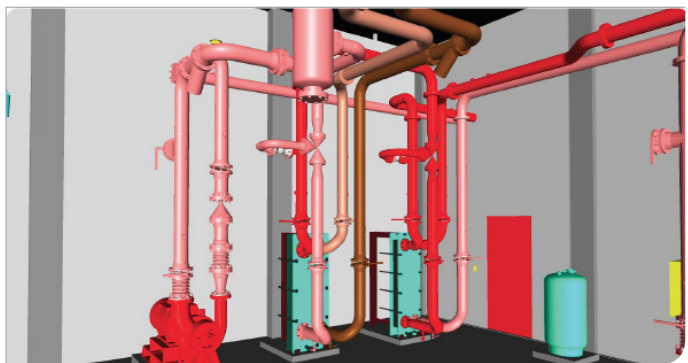
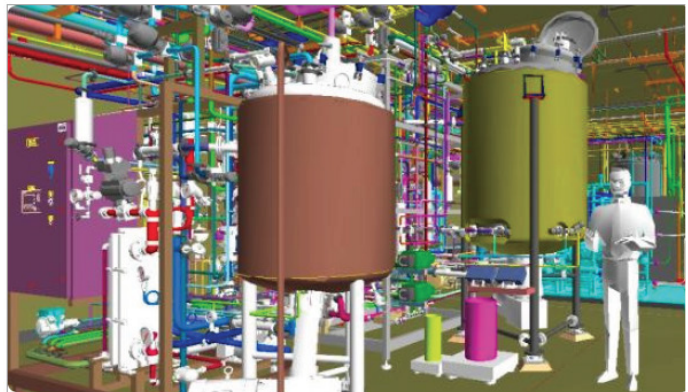
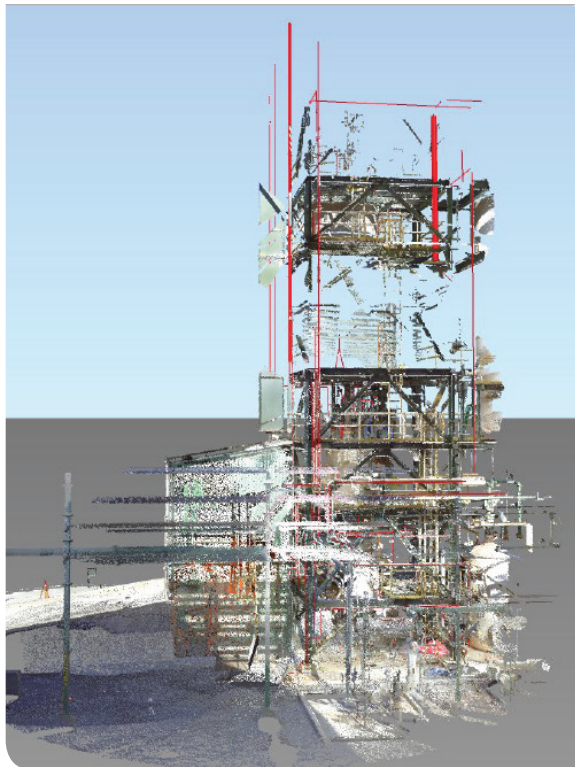
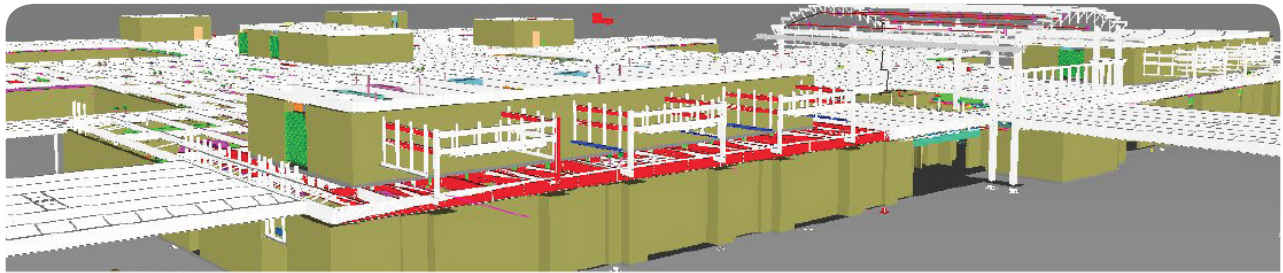
www.infinitydgc.com



11605 Shelbyville Road, Louisville, KY 40243
502.244.2235 | www.infinitydgc.com

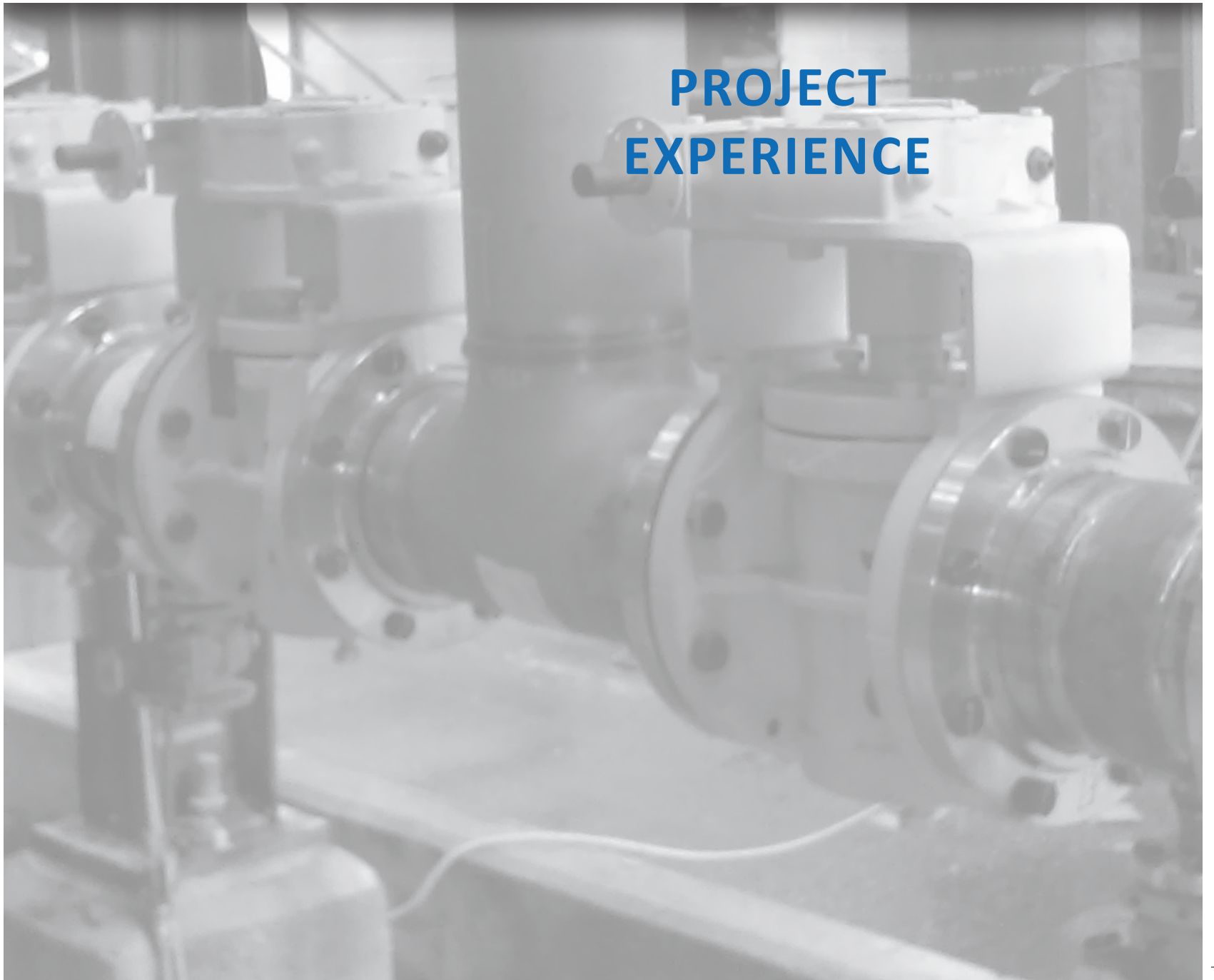
OUR PHILOSOPHY

- ★ Manage Cost Control
- ★ One Point of Contact
- ★ Professionals in Each Specific Trade
- ★ Engineering/Design Orientated Construction Management (Fix Issues in the Field)





**PROJECT
EXPERIENCE**



PAST PROJECT SUCCESSES

CLARIANT

- ★ Engineering and Design
- ★ Quality Control/Assurance
- ★ Project Value: \$240 million

ARCHER DANIEL MIDLAND (ADM)

- ★ Engineering and Design
- ★ Project Value: \$272 million

ROHM AND HAAS

(CURRENTLY THE DOW CHEMICAL COMPANY)

- ★ Engineering, Design and Construction Management
- ★ Project Value: On site Contract for Multiple Projects in Excess of \$3 million

AMERICAN SYNTHETIC RUBBER COMPANY (ASRC)

- ★ Design and Construction Management
- ★ Project Value: \$18 million

OWENSBORO HOSPITAL

- ★ Design and Field Coordination
- ★ Project Value: \$51 million





SERVICES PROVIDED

- ★ **Mechanical and Structural Engineering, Civil Engineering**
- ★ **Pipe Stress and Structural Steel Analysis**
- ★ **P&ID Support (creation or revision)**
- ★ **PE Stamped Drawings**
- ★ **3D Spatial Scanning**
- ★ **3D Piping Design**
- ★ **Isometric Drawings**
- ★ **Issue for Construction packages**
- ★ **MEP Coordination (BIM Modeling)**
- ★ **Robotic Total Station Construction Layout**
- ★ **Material Take-offs**
- ★ **Cost Estimating**
- ★ **Construction Management**





INTRO

Infinity Design and Construction Group is a full service design and construction company providing the latest technology from 3D Scanning, 3D Design and Construction services. We invest in our operations to stay at the forefront of technology, quality and service.

Our 3 Phase approach using 3D Reality Capture, Intelligent 3D Design and 3D Construction Management Services allow us to “Close the Loop” on many potential issues on a project.

PHASE I

3D Reality Capture 3D Scanning

The basis for any successful retrofit project is knowing exactly what the existing conditions are. From mechanical, piping, steel, architectural to site grade, we are able to collect all these features with our 3D scanners and Robotic Total Stations.

ADVANTAGES TO 3D SCANNING

- ★ Safety
 - Minimized Field Time =
Less opportunities for an accident to occur
 - Capture Data from Safe Distances =
Reduces exposure to dangerous conditions
- ★ Rapid Data Capture
- ★ Lessens Labor Costs
- ★ Shorten Project Shutdown Schedules
- ★ Reduce Rework
- ★ Leave behind survey control points to easily come back and scan for future projects



*3D Reality Capture 3D Scanning:
Example of existing conditions [photo]*



*3D Reality Capture 3D Scanning:
Example of existing conditions (3D scan)*



PHASE II

Intelligent 3D Engineering & Design

Having seamless information from beginning to the end of any project leads to success.

After collecting all the existing conditions with our 3D scanners, we utilize the latest 3D Engineering and Design software to design the project.

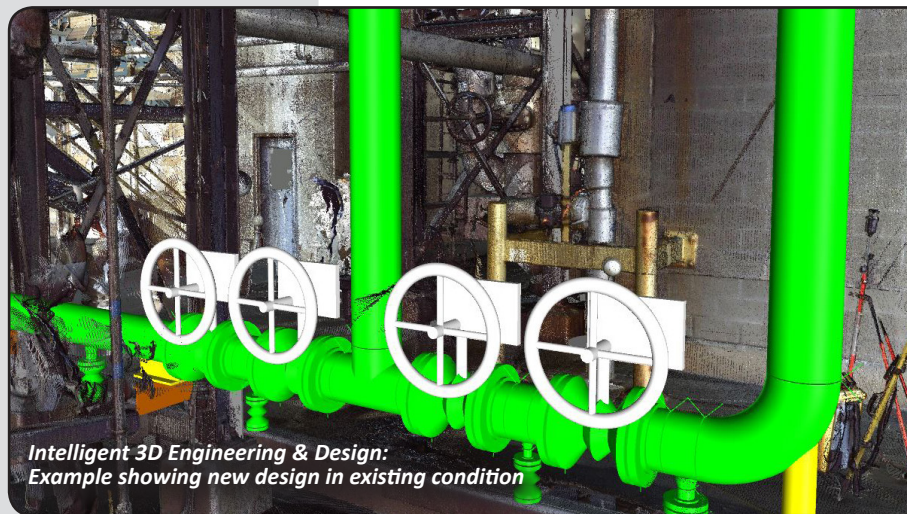
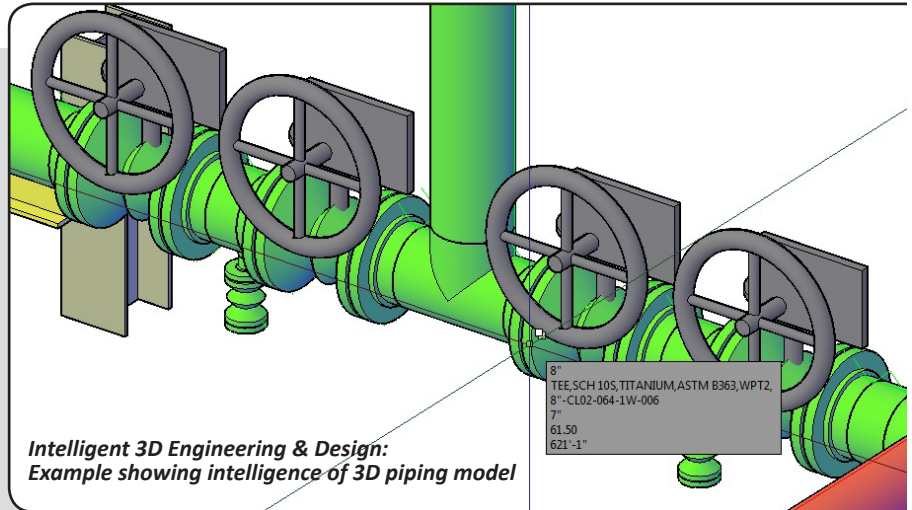
All our projects are done using Intelligent 3D design software.

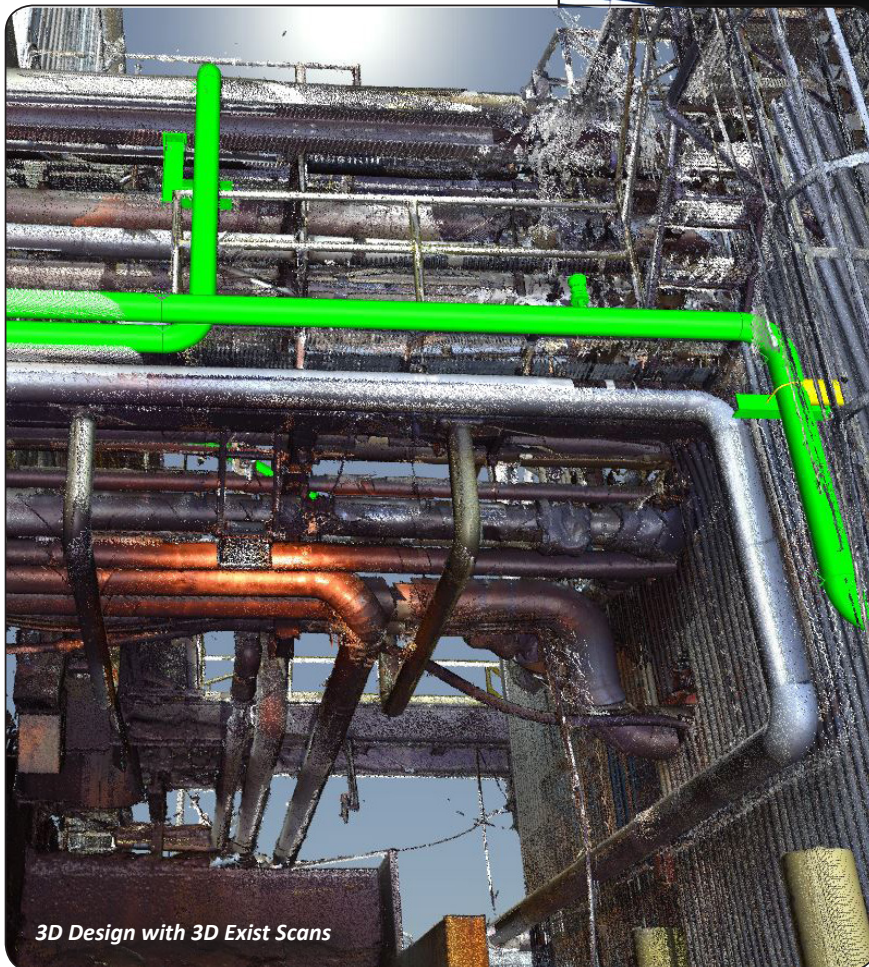
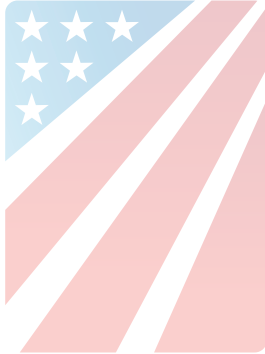
THIS ALLOWS THE ENTIRE PROJECT TEAM TO:

- ★ Visualize the project before it is issued for construction
- ★ Take a concept to construction faster by:
 - Reviewing multiple options in the FEED (Front End Engineer & Design) Phase
 - Reducing revision time
 - Simulation of operations
 - Database controlled Specifications – Fast Bill of Materials
 - Single source for engineering tasks such as structural steel analysis or pipe stress analysis
 - Quickly produce fabrication documents from the model such as pipe fabrication isometrics
- ★ Have a single source of information (the model) instead of many documents
- ★ Interference check on all new project models against the existing condition collected in Phase I Reality Capture

All design and engineering data is stored and secured on our internally developed software, PPM (Project Portfolio Manager).

Intelligent 3D Engineering & Design:
Example showing intelligence of 3D piping model.





3D Design with 3D Exist Scans

Post Construction



PHASE III

■ Construction Management

■ Construction Layout

■ Construction

We have found, in our industry, one of the largest obstacles to overcome is multiple sources for project information. This not only hinders the project schedule, but can also create confusion amongst the trades. In order to “Close the Loop”, we use two main tools in the construction phase of the project.

CONSTRUCTION MANAGEMENT:

Infinity’s PPM
(Project Portfolio Manager) Software

- ★ Is login controlled for reliable tight security
- ★ Users can be assigned personalized credentials based on their project role
- ★ Can be accessed via the web using many popular web browsers
- ★ Begins to be utilized in the FEED portion of the project all the way through commissioning
- ★ All project related information can be stored on a single source of reference.
- ★ Bar codes are created in the design phase and are printed and stuck to equipment, piping, instrumentation etc. for quick field access to the object.
- ★ Instant access to the location of all project related materials (Piping, Equipment, Instrumentation, etc.)
- ★ Project Controls – Schedule and Cost Control

Project - Home

wkmckinney wkmckinney[Manager] (Log Out) (My Profile)

Home Civil Structural Equipment Electrical Instrumentation Piping Schedule Tasks Master Documents Commission

Project: [] Update

Project Information

Name: []

Project Manager: McCool, Jeremy

Status: Active

Civil/Structural Leader: 61

Equipment Leader: Balmer, Terry

Electrical/Instrumentation Leader: 56

Piping Leader: Morrison, Chris

Schedule Leader: 21

Map Satellite

Project Portfolio Manager

Normal View Test Commissioning Notes

ISO: 011027-61-01 R0 [M-2: Base]
011027-61-02 R0 [M-2: Base]
011027-62-01 R2 [M-1: IFC- Addendum FCN-]
011027-62-02 R2 [M-1: IFC- Addendum FCN-]
011027-62-03 R0 [M-1: M1: IFC - Addendum]
011027-62-04 R1 [M-1A: Issue For Fabrication]
011027-90-01 R1 [M-1A: Issue For Fabrication]
011027-90-02 R1 [M-1A: Issue For Fabrication]

Revision: 1

Notes: []

Save Close Add Revision Full Size Display Preview

Deliver Material Fabrication Site Delivery Install Test Commission Accept Line List Spool Documents

	Print Barcode	Spool	Status	Fab Date	Contractor Note	Notes	Created By	Last Modified By
+	[Barcode]	SPL1	Accepted	1/20/2015	45	green	Admin Jan 26 2015 10:46AM	Chris Morrison Jan 27 2016 9:48AM
+	[Barcode]	SPL2	Accepted	1/20/2015	46	green	Admin Jan 26 2015 10:46AM	Chris Morrison Jan 27 2016 9:48AM
+	[Barcode]	SPL3	Accepted	1/20/2015	47	green	Admin Jan 26 2015 10:46AM	Chris Morrison Jan 27 2016 9:48AM
+	[Barcode]	SPL4	Accepted	1/21/2015	48	green	Admin Jan 26 2015 10:46AM	Chris Morrison Jan 27 2016 9:48AM

Print All Barcodes Save changes Cancel changes

Piping Editor



PHASE III (continued)

CONSTRUCTION LAYOUT:

Robotic Total Station

- ★ Capability of loading 3D Model onto Total Station
- ★ Provides accurate locations based on 3D Model in conjunction with Project coordinate system
- ★ Minimizes labor required to accomplish layout
- ★ Reduces chances of misinterpretation of construction documents

CONSTRUCTION

- ★ Single source of information prevents confusion
- ★ Efficient staging of materials
- ★ Effective installation
- ★ Streamlined for Commissioning
- ★ Accurate progress for billing
- ★ Real time as-built once project is complete

